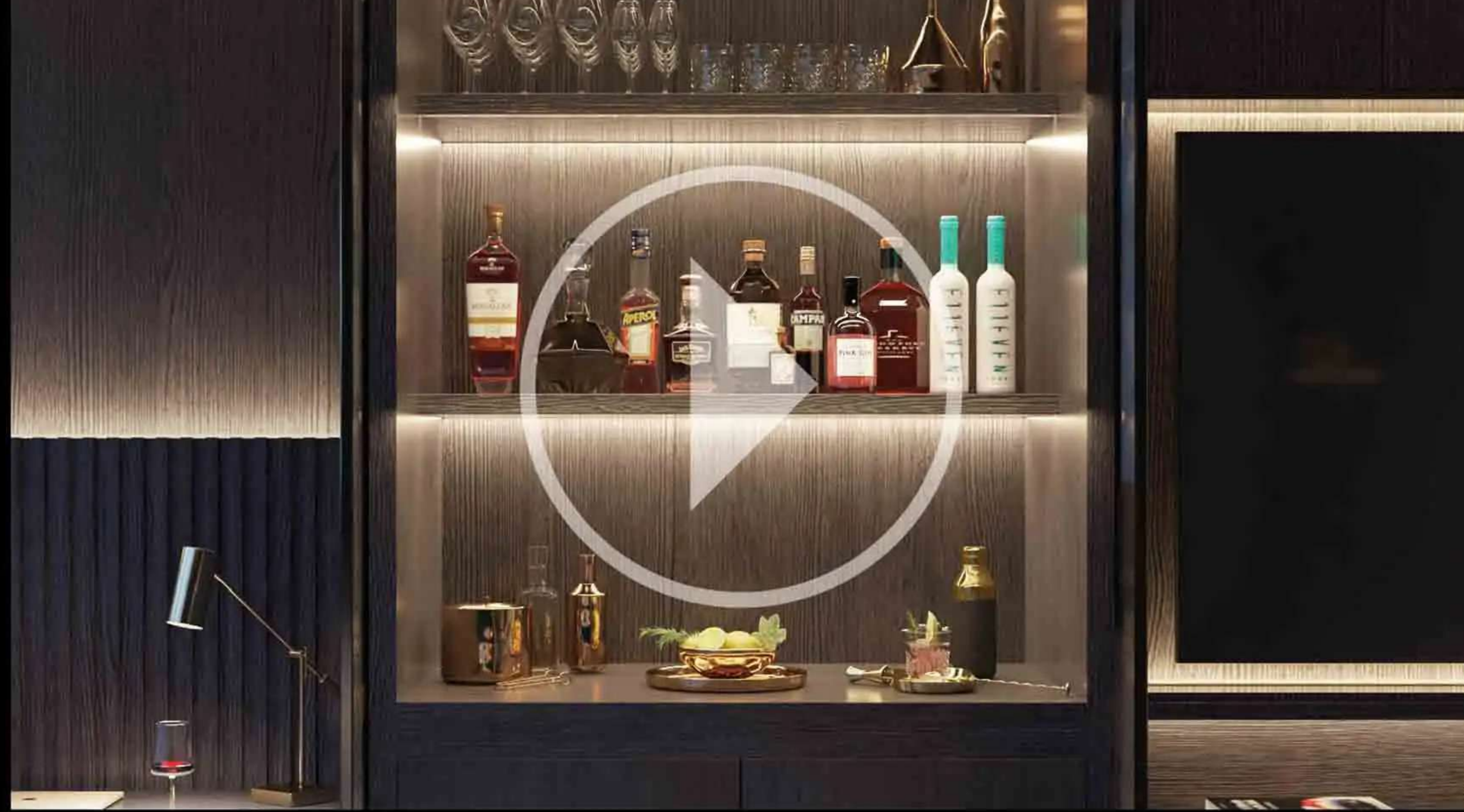


E11EVEN[®]

RESIDENCES MIAMI

Beyond



WATCH VIDEO

INTRODUCING THE SPEAKEASY COLLECTION

Discover the new one-of-a-kind collection at
E11EVEN[®] Residences Beyond

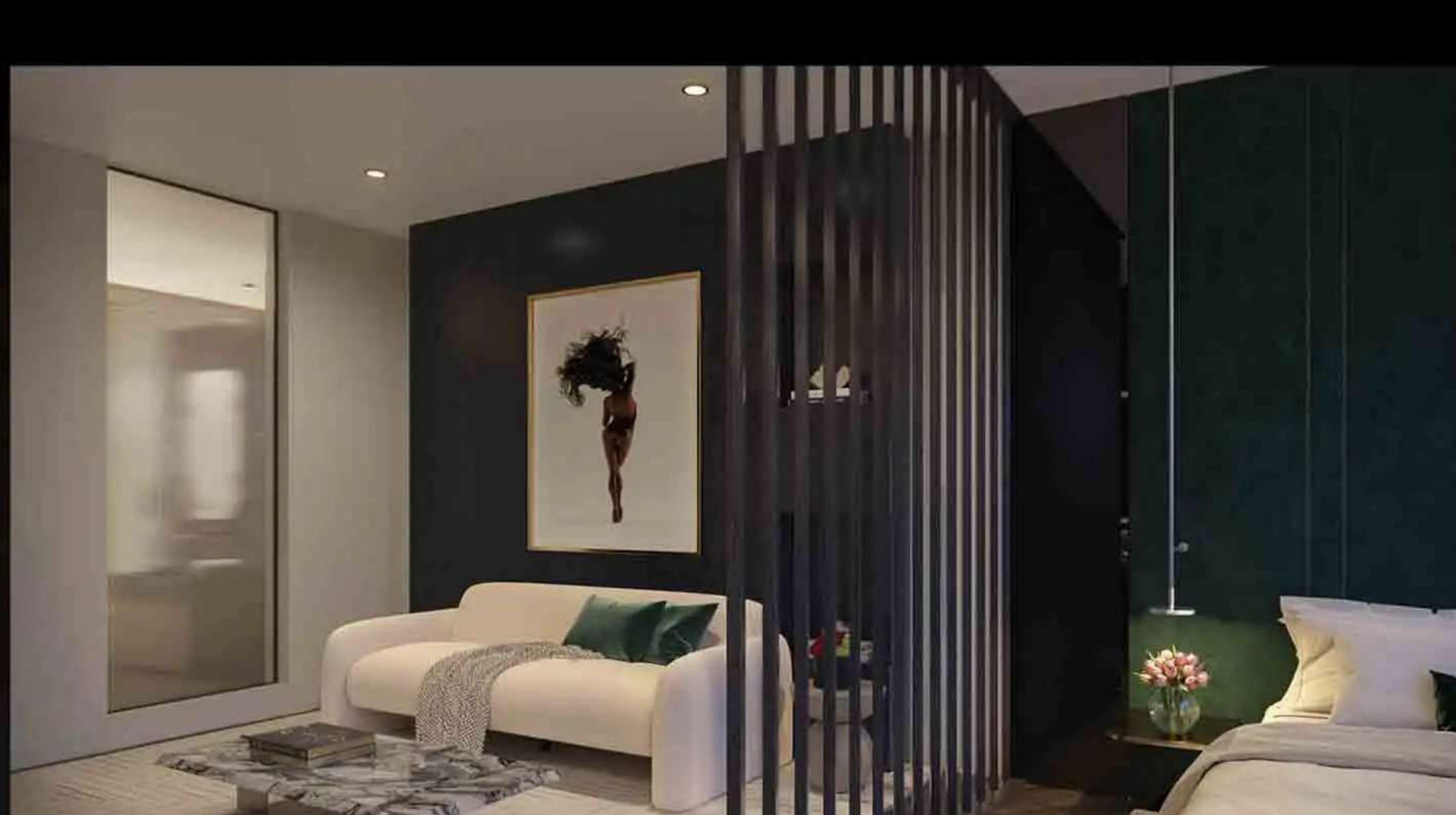
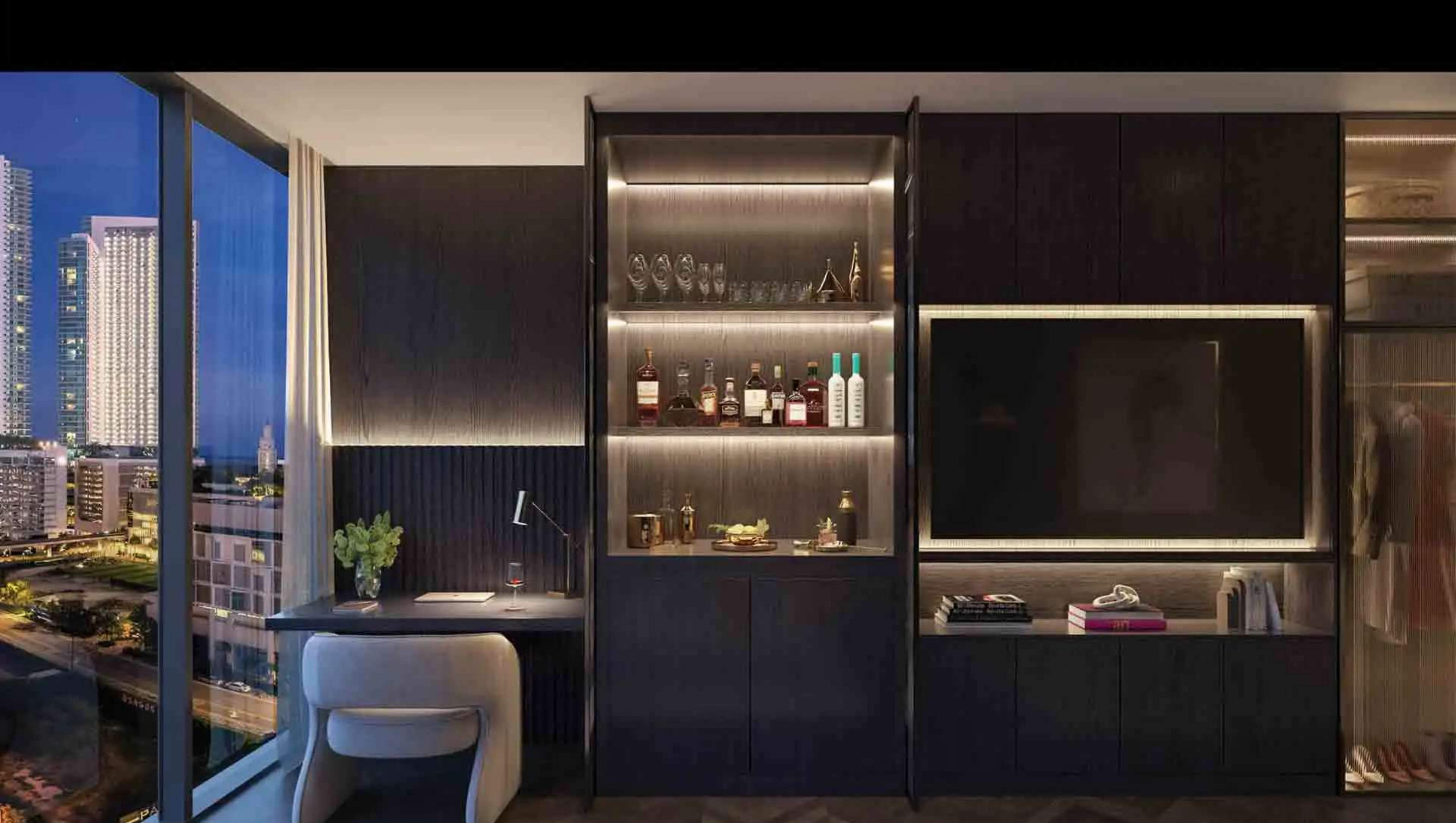


ARTIST CONCEPTUAL RENDERINGS



SPEAKEASY COLLECTION FEATURES

- Speakeasy Collection Entertainment Center; a custom-built entertainment center with LED lighting, mounted TV and an integrated modern cocktail bar encased in fluted glass doors
- Concealed European-made Murphy bed offering flexibility to seamlessly switch between a seating area or additional sleeping accommodations
- Modern slatted wood veneer partition for added privacy while allowing natural light to flow within residence
- Lavishly fluted glass accent wall between shower and living area
- Fully custom-built closets with glass doors
- Cocktail bar comes fully stocked with premium liquors*



ARTIST CONCEPTUAL RENDERINGS



BUILDING FEATURES

- 65-story tower in Miami's District 11
- E11EVEN[®] signature bridge connecting Tower 1 to Tower 2
- Private Rooftop Helipad (pending approvals)
- Resort style pool and upper deck with bar
- State-of-the-art fitness and wellness center
- E11EVEN[®] Fully Staffed Executive Office Suites
- Access to E11EVEN[®] Hotel and Residences amenities which include the Chopra Spa & Studio and E11EVEN[®] Day Club

E11EVEN[®]

RESIDENCES MIAMI

Beyond



*One time stock. Ask sales associate for further details.

NO FEDERAL AGENCY HAS JUDGED THE MERITS OR VALUE, IF ANY, OF THIS PROPERTY. THIS IS NOT AN OFFER TO SELL, OR SOLICITATION OF OFFERS TO BUY, THE CONDOMINIUM UNITS IN STATES WHERE SUCH OFFER OR SOLICITATION CANNOT BE MADE. THESE DRAWINGS ARE CONCEPTUAL ONLY AND ARE FOR THE CONVENIENCE OF REFERENCE. THEY SHOULD NOT BE RELIED UPON AS REPRESENTATIONS, EXPRESS OR IMPLIED, OF THE FINAL DETAIL OF THE RESIDENCES. UNITS SHOWN ARE EXAMPLES OF UNIT TYPES AND MAY NOT DEPICT ACTUAL UNITS. STATED SQUARE FOOTAGES ARE RANGES FOR A PARTICULAR UNIT TYPE AND ARE MEASURED TO THE EXTERIOR BOUNDARIES OF THE EXTERIOR WALLS AND THE CENTER LINE OF INTERIOR PARTITION WALLS AND IN FACT ARE LARGER THAN THE AREA THAT WOULD BE DETERMINED BY USING THE DISCRESSION AND DEFINITION OF THE UNIT'S SET FORTH IN THE DECLARATION OF CONDOMINIUM WHICH GENERALLY ONLY INCLUDES THE INTERIOR AIRSPACE BETWEEN THE PERIMETER WALLS AND EXTERIOR INTERIOR STRUCTURAL COMPONENTS. THE AREA OF THE UNITS SHOWN IN THE DECLARATION IS LESS THAN THE SQUARE FOOTAGE REFLECTED HERE. ALL DEPICTIONS OF APPLIANCES, PLUMBING FIXTURES, EQUIPMENT, COUNTERS, SOFFITS, FLOOR COVERINGS AND OTHER MATTERS OF DETAIL ARE CONCEPTUAL ONLY AND ARE NOT NECESSARILY INCLUDED IN EACH UNIT. THE FURNISHINGS AND DÉCOR ILLUSTRATED OR DEPICTED ARE NOT INCLUDED WITH THE PURCHASE OF THE UNIT. CONSULT YOUR PURCHASE AGREEMENT AND ANY ADDENDA THERETO FOR THE ITEMS INCLUDED WITH THE UNIT. DIMENSIONS AND SQUARE FOOTAGE ARE APPROXIMATE, WILL VARY WITH SPECIFIC UNIT TYPE AND MAY VARY WITH ACTUAL CONSTRUCTION. ADDITIONALLY, MEASUREMENTS OF ROOMS SET FORTH ON ANY FLOOR PLAN ARE NOMINAL AND GENERALLY TAKEN AT THE GREATEST POINTS OF EACH GIVEN ROOM (AS IF THE ROOM WERE A PERFECT RECTANGLE, WITHOUT REGARD FOR ANY CUTOUTS, UNIT ORIENTATION AND WINDOWS INCLUDING NUMBER, SIZE, ORIENTATION AND OPENINGS), BALCONY TERRACES INCLUDING CONFIGURATION, SIZE AND RAILING-BUILDABLE STRUCTURE AND MECHANICAL CHASES MAY VARY. THE DEVELOPER EXPRESSLY RESERVES THE RIGHT TO MAKE MODIFICATIONS, REVISIONS AND CHANGES IT DEEMS DESIRABLE IN ITS SOLE AND ABSOLUTE DISCRETION AND WITHOUT NOTICE. ALL DRAWINGS ARE CONCEPTUAL RENDERINGS AND THE DEVELOPER EXPRESSLY RESERVES THE RIGHT TO MAKE MODIFICATIONS, REVISIONS AND CHANGES IT DEEMS DESIRABLE IN ITS SOLE AND ABSOLUTE DISCRETION AND WITHOUT NOTICE. ALL DRAWINGS ARE CONCEPTUAL RENDERINGS AND THE DEVELOPER EXPRESSLY RESERVES THE RIGHT TO MAKE MODIFICATIONS, REVISIONS AND CHANGES IT DEEMS DESIRABLE IN ITS SOLE AND ABSOLUTE DISCRETION AND WITHOUT NOTICE. THE INFORMATION PRESENTED WITHIN THIS DOCUMENT IS CONCEPTUAL. THE IMAGES AND FEATURES CONTAINED HEREIN ARE NOT TO BE RELIED UPON OR USED AS A REFERENCE FOR SPECIFICATIONS. THE FOREGOING MATTERS ARE FURTHER ADDRESSED IN THE PURCHASE AGREEMENT AND ANY ADDENDA THERETO AND THE CONDOMINIUM DOCUMENTS.